



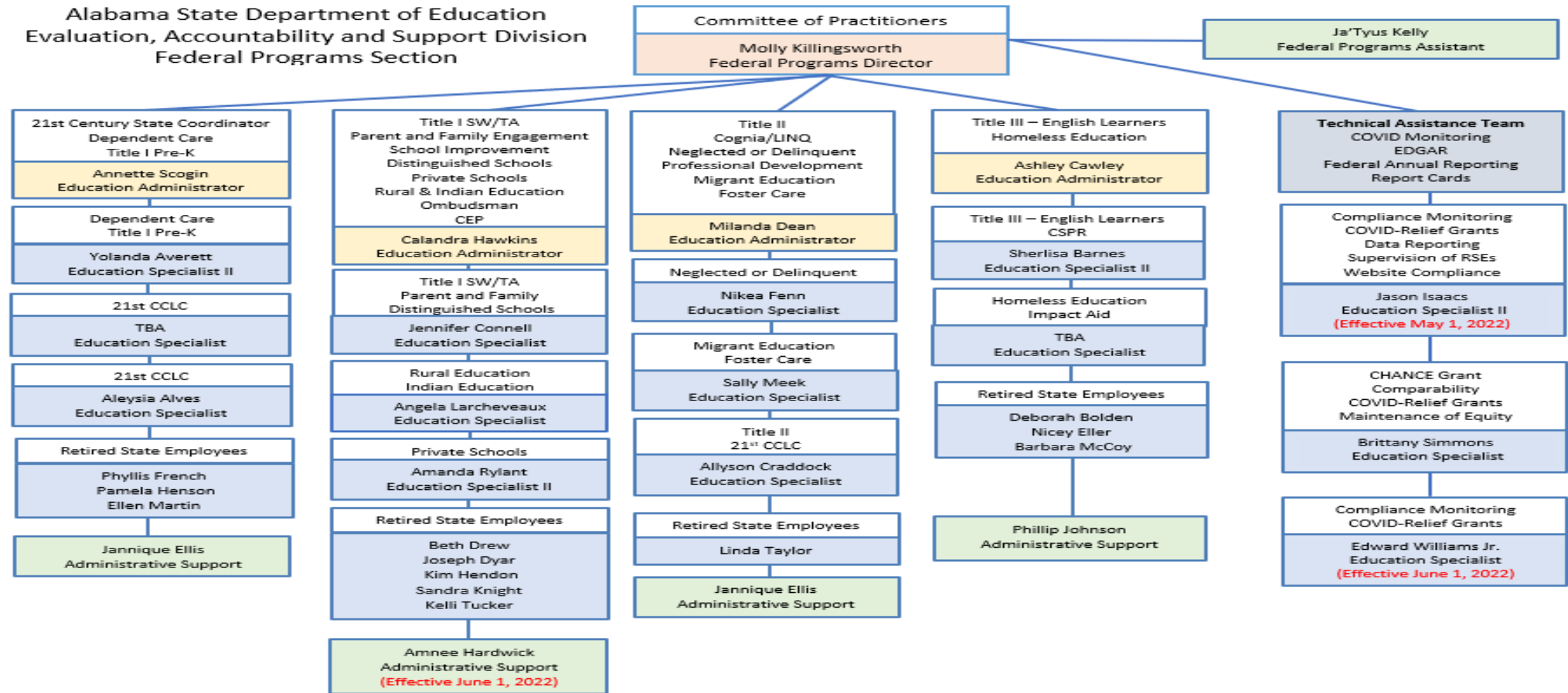
Federal Programs MEGA Presentation

July 13, 2022



Federal Programs Team

Alabama State Department of Education
Evaluation, Accountability and Support Division
Federal Programs Section



Regional Specialists



TECHNICAL ASSISTANCE GROUPS (TAG) JULY 2022

Federal Programs Specialists Assignments/eGAP

| Nikea Fenn Team 1 | Angela Larcheveaux Team 2 | Amanda Rylant Team 3 | Brittany Simmons Team 4 | Yolonda Averett Team 5 | Allyson Craddock Team 6 | TBD Team 7 |
|---|---|---|--|---|--|---|
| Colbert County Franklin County Haleyville City Jasper City Marion County Muscle Shoals City Russellville City Sheffield City Tusculumbia City Walker County Winfield City Winston County | ACCEL Academy Break Through Academy i3 Academy LEAD Academy Legacy Prep Life Academy Magic City Academy University Charter School | Albertville City Arab City Boaz City DeKalb County Fort Payne City Guntersville City Huntsville City Jackson County Madison City Madison County Marshall County Scottsboro City | Choctaw County Demopolis City Fayette County Greene County Hale County Lamar County Linden City Marengo County Pickens County Sumter County Tuscaloosa City Tuscaloosa County | Alabaster City Birmingham City Blount County Fairfield City Homewood City Jefferson County Leeds City Midfield City Trussville City Mountain Brook City Vestavia Hills City | Anniston City Attalla City Calhoun County Cherokee County Clay County Etowah County Gadsden City Jacksonville City Oxford City Piedmont City Randolph County Roanoke City | Alexander City Bibb County Chilton County Coosa County Hoover City Pelham City Shelby County Sylacauga City Talladega City Talladega County Tallapoosa County |
| Edward Williams Team 8 | Sally Meek Team 9 | Sherlisa Barnes Team 10 | Aleysia Alves Team 11 | TBD Team 12 | Jennifer Connell Team 13 | |
| Autauga County Barbour County Butler County Dallas County Elmore County Lowndes County Perry County Pike Road City Selma City Tallasse City Wilcox County | Auburn City Bullock County Chambers County Dale County Eufaula City Lanett City Lee County Montgomery County Opelika City Ozark City Russell County | Baldwin County Brewton City Chickasaw City Clarke County Conecuh County Gulf Shores City Mobile County Monroe County Saraland City Satsuma City Thomasville City Washington County | Andalusia City Cleburne County Coffee County Daleville City Dothan City Enterprise City Geneva City Geneva County Henry County Houston County Pike County Troy City | Bessemer City Crenshaw County Covington County Elba City Escambia County Macon County Opp City Pell City Phenix City St. Clair City Tarrant City | Athens City Cullman City Cullman County Decatur City Florence City Hartselle City Lauderdale County Lawrence County Limestone County Morgan County Oneonta City | |



Office of Federal Programs

Goals & Priorities

- Highly Reliable
- Service Orientation
- Compliance with Federal & State Mandates
- Student Achievement Focus
- Program Coordination



Changes for Monitoring

(Compliance and COVID Relief)



Purpose

The purpose of monitoring in the Federal Programs Section of the ALSDE is to provide the support districts need with the implementation of federal programs while navigating the requirements that each fund has within the Elementary and Secondary Education Act (ESEA).

The intent is not to look for things that are wrong, but to learn from districts what they are doing with their federal funds, assure that they are meeting the requirements within each fund, and if that is not the case, provide technical assistance to remedy any issues.



Programs to be Monitored

The following programs will be monitored as a part of the Compliance Monitoring process:

- Title I, Part A – Improving the Academic Achievement of the Disadvantaged
- Title I, Part A – Foster Care Program
- Title I, Part A – Preschool
- Title I, Part A – Parent and Family Engagement
- Title I, Part C – Migrant Children Education
- Title I, Part D – Neglected and Delinquent Children Program
- Title II, Part A – Supporting Effective Instruction
- Title III, Part A – Language Instruction for English Learners & Immigrant Students
- Title IV, Part B – 21st Century Community Learning Centers
- Title V, Part B – Rural Education Achievement Program
- Title IX, Part A – McKinney-Vento Homeless Assistance Act
- Equitable Services for Non-Public Schools
- COVID Relief Programs (ESSER I | ESSER II | ARP ESSER | GEER I)

› NOTE: If an LEA was monitored for ESSER I and GEER I during the 2021-2022 Pilot Year, they will only be monitored for ESSER II and ARP ESSER.



2022-2023 Compliance Monitoring LEA List

| | | | |
|----------------------|-------------------|--------------------|-------------------|
| Arab City | Decatur City | Limestone County | Talladega County |
| Auburn City | Elmore County | Magic City Academy | Tallapoosa County |
| Autauga County | Escambia County | Marion County | Thomasville City |
| Bibb County | Fort Payne City | Mobile County | Washington County |
| Boaz City | Huntsville City | Monroe County | Winfield City |
| Breakthrough Academy | Jacksonville City | Ozark City | Winston County |
| Butler County | Lee County | Pike County | |
| Daleville City | Life Academy | Saraland City | |



Compliance Monitoring Process

For the 2022-2023 School Year, the Federal Programs Section of the ALSDE will only be monitoring the LEAs included on the 5-year rotation on the ALSE Compliance Monitoring List using a 3-tier approach.



Risk Assessment

In order to assess the risk of LEAs within the State of the Alabama, the Federal Programs Section of the ALSDE has created a Risk Assessment that uses some of the following indicators:

- Title I Budget Allocation
- Title I Carryover Percentage
- LEAs with NEW Federal Funds/Grants
- # of Federal Fund/Grant Sources
- Changes in Key Personnel (Superintendent/CSFO/Federal Programs Coordinator)
- eGAP Approval Date
- Findings from Last Compliance Monitoring Review
- Title I ES-2 Drawdown Percentage



2022-2023 3-Tier Process

Based on the results of the Risk Assessment, LEAs will be placed into one of the following three tiers:

- Tier 1: Low Risk
- Tier 2: Moderate Risk
- Tier 3: High Risk

NOTE: During the compliance monitoring process, it is possible that an LEA might move tiers based on documentation that is submitted and reviewed if additional information is needed.

| Tier Level | Risk Level | Type of Monitoring |
|------------|------------|----------------------|
| 1 | Low | Documentation Review |
| 2 | Moderate | Desk Review |
| 3 | High | On-Site Visit |



2022-2023 3-Tier Process

Detailed documents and training will be provided for each of the 3-tiers of monitoring once LEAs are notified of their risk level.

LEAs will be notified of their risk level by 4 PM on Monday, July 18, 2022.

| Tier Level | Risk Level | Type of Monitoring |
|------------|------------|----------------------|
| 1 | Low | Documentation Review |
| 2 | Moderate | Desk Review |
| 3 | High | On-Site Visit |



Compliance Monitoring Trainings

| Type of Training | Session 1 | Session 2 | Session 3 |
|-------------------------|--|---|--|
| Pre-Monitoring Training | August 9 th @ 9:00 AM | August 11 th @ 1:00 PM | |
| Office Hours | August 17 th 2:00 – 3:00 PM | August 25 th 10:00 AM – 11:00 AM | August 30 th 8:30 – 9:30 AM |

LEAs are expected to attend one of the pre-monitoring training sessions.

Links to the Trainings:

August 9th Session: <https://alsde.webex.com/alsde/j.php?MTID=m6780d79aaf19feb44bea64ed2ce0f17c>

August 11th Session: <https://alsde.webex.com/alsde/j.php?MTID=m413f531de7242d7b7e7248242cb457b6>

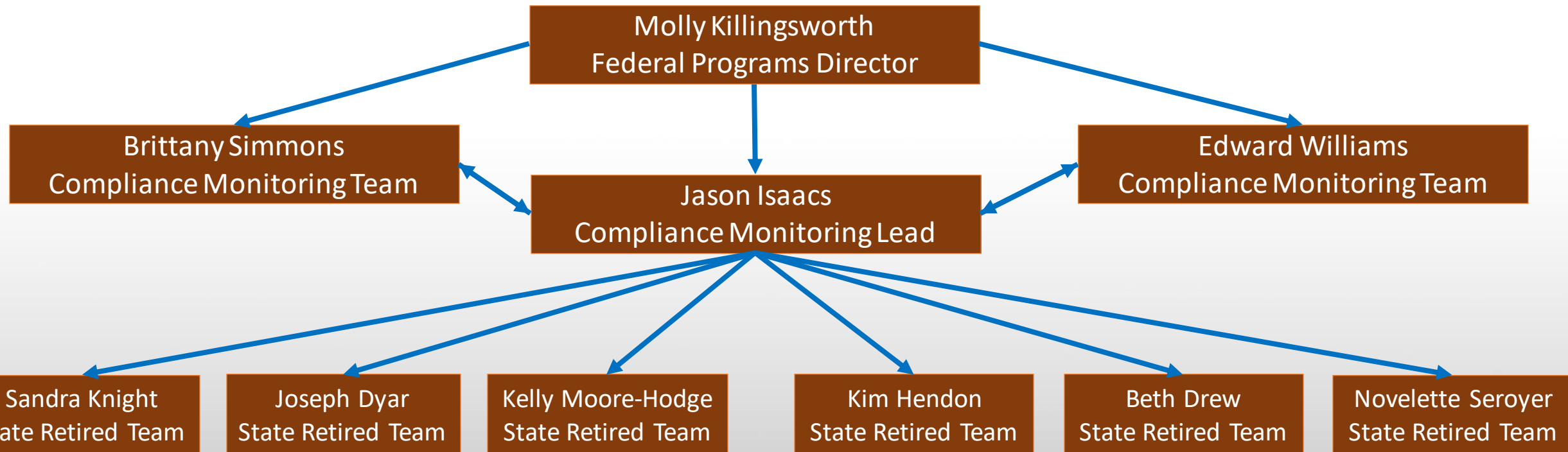
August 17th Session: <https://alsde.webex.com/alsde/j.php?MTID=m96b7ffcdb20252980c744e204c47dac7>

August 25th Session: <https://alsde.webex.com/alsde/j.php?MTID=m5757ff972fe273d1301a2056d7228f43>

August 30th Session: <https://alsde.webex.com/alsde/j.php?MTID=m857985f89ffb5f5fba20c8d311dfdace>



Compliance Monitoring Team



2021-2022 Findings from COVID Monitoring

- › Application does not match the Budget Analysis Report
- › Funds used for unallowable expenditures
- › Coding Issues
- › Inventory Spreadsheet not including all required components
- › Expenditures not inventoried
- › Time and Effort not completed
- › Equitable Services



Compliance Monitoring Process 2023-2024

For the 2023-2024 School Year, additional phases to the Compliance Monitoring Process will be implemented. Additional information is forthcoming.



Sanctions



Maintenance of Equity



What is Maintenance of Equity?

ESSER recipients **must comply** with these new requirements.

Ensure that States and LEAs **do not** use ESSER funds to reduce State and local financial support for education.

Ensure that each LEA **safeguards** its high-poverty schools from disproportionate cuts to funding and staffing.

Funding Test—state and local funding sources only

Staffing Test—all paid staff, both instructional and non-instructional (hired and contracted)

Total number of schools in LEA \div 4 =
Number of high-poverty schools



MoEquity Compliance Paths

1. Automatically Exempt LEAs

- LEAs with fewer than 1,000 students
- Single school LEAs
- LEAs with one school per grade span

| | | | | | | |
|-----------------------------|-------------------------------|--------------------------------------|-----------------|-------------------|-----------------|------------------|
| Andalusia City | Lanett City | Russellville City | Boaz City | Gulf Shores City | Oneonta City | Sylacauga City |
| Barbour County | LEAD Academy | Troy City | Brewton City | Guntersville City | Opp City | Tallassee City |
| Breakthrough Charter School | Legacy Prep | University Charter School | Coosa County | Haleyville City | Ozark City | Tarrant City |
| Bullock County | LIFE Academy | Acceleration Day and Evening Academy | Daleville City | Jacksonville City | Roanoke City | Thomasville City |
| Chickasaw City | Magic City Acceptance Academy | Albertville City | Demopolis City | Jasper City | Saraland City | Tuscumbia City |
| Eufaula City | Midfield City | Alexander City | Elba City | Leeds City | Satsuma City | |
| Greene County | Piedmont City | Arab City | Fort Payne City | Linden City | Scottsboro City | |
| i3 Academy | Pike Road City | Attalla City | Geneva City | Marengo County | Sheffield City | |



MoEquity Compliance Paths

2. LEAs Not Automatically Exempt – Plan 1: Complete MoEquity Document Submission Plan (Appendix B). On this document, the LEA will complete the “LEA Self-Certification” to confirm/certify that your LEA has no aggregate reduction in combined state and local per-pupil funding to any schools in FY 2022.



MoEquity Compliance Paths (Follow-Up Required)

- 3. LEAs Not Automatically Exempt – Plan 2:** Notify ALSDE that you will be seeking a waiver directly from USDOE. Request should provide detailed information on the uncontrollable circumstance and how it prevents the LEA from maintaining equity. Follow-up by sending the waiver request to Alabama.oese@ed.gov and copying MOEquity@alsde.edu.
- 4. LEAs Not Automatically Exempt – Plan 3:** Complete MoEquity Report in late Summer/early Fall 2022.



Administering the Funding Test

(With a reduction of \$123)

| Examples | Per-pupil Reduction in State and Local Funds across All Schools in Quick County | High-poverty school 1 Quick Elementary Per-pupil Reduction | High-poverty school 2 Quick Middle Per-pupil Reduction |
|------------|--|--|--|
| Scenario 1 | FY21 Per-Pupil Amount: \$7,004.02 FY22 Per-Pupil Amount: \$6,881.02 Reduction: \$123 | FY21 Per-Pupil Amount: \$6,800.50 FY22 Per-Pupil Amount: \$6,800.50 Reduction: \$0 | FY21 Per-Pupil Amount: \$6,720.50 FY22 Per-Pupil Amount: \$6,660.50 Reduction: \$60 |
| Scenario 2 | FY21 Per-Pupil Amount: \$7,004.02 FY22 Per-Pupil Amount: \$6,881.02 Reduction: \$123 | FY21 Per-Pupil Amount: \$6,625.50 FY22 Per-Pupil Amount: \$6,800.50 Reduction: \$0 (increase of \$175) | FY21 Per-Pupil Amount: \$6,625.50 FY22 Per-Pupil Amount: \$6,525.00 Reduction: \$100 |
| Scenario 3 | FY21 Per-Pupil Amount: \$7,004.02 FY22 Per-Pupil Amount: \$6,881.02 Reduction: \$123 | FY21 Per-Pupil Amount: \$6,625.50 FY22 Per-Pupil Amount: \$6,500.00 Reduction: \$125.50 | FY21 Per-Pupil Amount: \$6,678.50 FY22 Per-Pupil Amount: \$6,500.50 Reduction: \$178 |
| Scenario 4 | FY21 Per-Pupil Amount: \$7,004.02 FY22 Per-Pupil Amount: \$6,881.02 Reduction: \$123 | FY21 Per-Pupil Amount: \$6,625.50 FY22 Per-Pupil Amount: \$6,425.50 Reduction: \$200 | FY21 Per-Pupil Amount: \$6,720.50 FY22 Per-Pupil Amount: \$6,597.50 Reduction: \$123 |



MoEquity

LEAs who meet the requirements for MoEquity exemptions and schools who qualify for high-poverty status were posted on the ALSDE website on July 8th.

Landing Page:

[Alabama Federal Programs - MOEquity Reporting - Alabama State Department of Education \(alabamaachieves.org\)](https://www.alabamaachieves.org/wp-content/uploads/2022/07/FP_202277_MOEquity-reporting-ALSD-2022-2023.pdf)

Data Link:

https://www.alabamaachieves.org/wp-content/uploads/2022/07/FP_202277_MOEquity-data_V1.0.xlsx



eGAP 2.0



eGAP 2.0

eGAP 2.0 Home

eGAP 2.0 Sign-In

Announcements

(6/2/2022)

Welcome to eGAP 2.0!

While most of the functionality is the same (with a new look and feel), there are some new things to learn. Copies of the training PowerPoint can be [accessed here](#).

- Implementation: Fall 2022
- eGAP 2.0 website: <https://alabama.egrantsmanagement.com>
- Follow the steps below to log in to eGAP 2.0 (first time user):
 - Select eGAP 2.0 Sign in.
 - Click “Forgot your password”.
 - Follow the prompts to reset your password.
 - Log in again using your complete email address and password



eGAP 2.0 Training Opportunities

MEGA Sessions

- Wednesday, July 13th from 12:45 PM – 3:00 PM
(Make plans to attend this session)
- Thursday, July 14th from 9:00 AM – 11:15 AM (Alternate session)
- Thursday July 14th from 12:45 PM – 3:00 PM (Alternate session)

Training Format:

- 1 Hour Training
- 15 Minute Break
- 1 Hour Work Session

NOTE: Make sure to bring your laptop to the training.



eGAP 2.0 Training Opportunities

August Trainings

PowerSchool Registration – Course Number: 283071

<https://alsde.truenorthlogic.com/ia/empari/login/index>

- August 23rd – Mobile, AL – University of South Alabama
- August 24th – Montgomery, AL – Alabama State University
- August 25th – Birmingham, AL – Jefferson County Central Office
- August 26th – Huntsville, AL – Madison County Teacher Resource Center



eGAP 2.0 Training Opportunities

ALSDE Federal Programs Fall Conference

- September 7th-9th - Renaissance Hotel, Montgomery, AL
(Thursday, September 8, 2022, 8:00 a.m. - 11:30 a.m.)



Federal Programs Updates and Reminders



Dates to Remember

ALSDE Federal Programs Fall Conference

September 7 – 9, 2022

Hotel Information:

Click Here: [Book your group rate for ALSDE Federal Programs Fall Conference](#)



2022 FALL CONFERENCE

SEPTEMBER 7-9

PowerSchool Registration:
FPFC ALSDE Federal Programs Fall Conference 2022
Course Number: 283286
Section Number: 438464

Conference Location:
Renaissance Montgomery Hotel & Spa
at the Convention Center
201 Tallapoosa Street
Montgomery, AL 36104

**Building on the Best:
Piecing Together
the Program
Planning Puzzle**

Guest Speakers

Dr. Greg Benner
Whole Child

Niki Spears
Educational Speaker



Fall Conference Sessions

- Piecing Together a Successful Year
- eGAP 2.0
- Compliance Monitoring 2.0
- Cognia
- Migrant Education Program Updates
- EL Program
- CSPR and PowerSchool Updates



[2022 Fall Conference Planning Survey](#)



Dates to Remember

Period of Allowability for COVID Relief Funds

ESSER I/GEER I – September 30, 2022 | No Amendments Allowed

ESSER II – September 30, 2023 | Amendment Deadline – March 15, 2023

ARP ESSER – September 30, 2024 | Amendment Deadline – March 15, 2024

CSPR Data Certification

Homeless, EL, Neglected or Delinquent, and Title I SWTA Portals Close July 22, 2022

McKinney-Vento Homeless Program Information

RFA due to eGAP 2.0 by August 1, 2022 at 11:59 PM



Dates to Remember

21st Century Program Information

Cohort 16 RFA due to eGAP 2.0 – July 22, 2022 at 11:59 PM

Cohort 14 Closeout – September 30, 2022

Consolidated Application Approval in eGAP 2.0

Applications should be submitted and approved by the ALSDE by October 1, 2022.

Alabama Continuous Improvement Plan (ACIP) & Coordination of Resources

ACIPs are due into the COGNIA system by October 17th.



LEA Virtual Trainings (Coming Soon)

Maintenance of Equity
Preventing Fraud & Misusing Funds
Braiding Funds
Programmatic Trainings



Federal Programs LEA Handbook

- › The Federal Programs handbook is a useful document that provides technical assistance for all federal programs.
- › Some of the topics include:
 - ACIP
 - eGAP
 - Maintenance of Effort
 - Supplement Not Supplant
 - Comparability
 - Transferability
 - Time and Effort
 - Inventory
 - Monitoring & Records Retention
 - Evidence-Based Interventions
 - Individual Federal Program Information
 - Equitable Services

**Federal Programs Handbook
2022-2023**



Federal Programs LEA Handbook

› Handbook Updates Include:

- Allowability of Expenditures
- Direct and Indirect Costs
- Supplement Not Supplant
- Time and Effort
- Financial Management for Federal Programs
- Procurement for Federal Programs
- Records Retention

Federal Programs Handbook
2022-2023

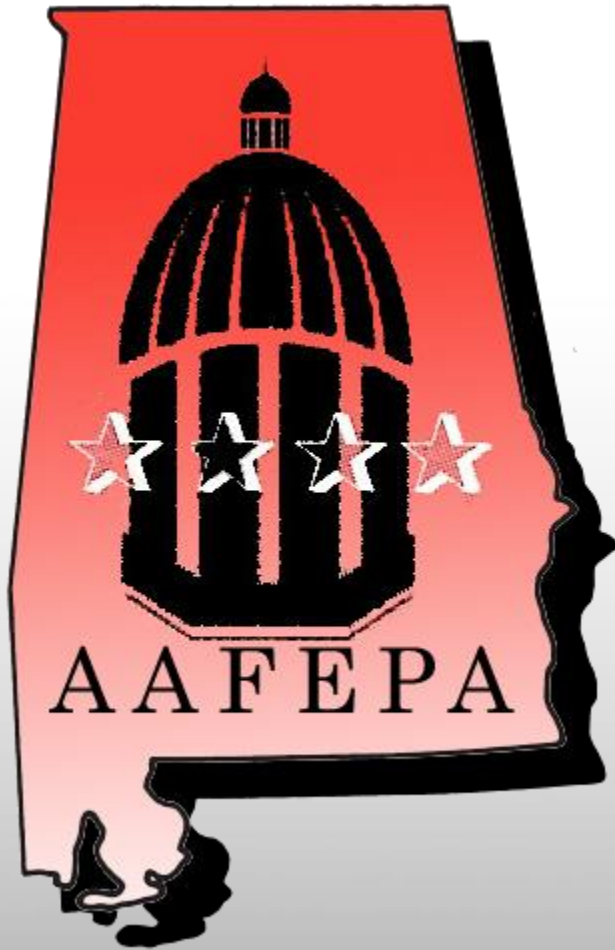


Sessions of Interest

| Date | Time | Location | Session |
|-----------|---------------------|----------------|---|
| Tuesday | 9:00 AM – 10:00 AM | Bon Secour III | Title III, Part A and State EL Funding: A Winning Combination for Student Success |
| Tuesday | 12:45 PM – 1:45 PM | Bon Secour II | High Poverty and High Performing: How Any Elementary School Can Improve |
| Tuesday | 10:15 AM – 11:15 AM | Jubilee | Equitable Services for Private Schools |
| Tuesday | 10:15 AM – 11:15 AM | Mobile Bay | Migrant Students Don't Live in My Area. Yes They Do! |
| Wednesday | 9:00 AM – 11:15 AM | Bon Secour I | Federal Programs General Session |
| Wednesday | 12:45 PM – 3:30 PM | Bon Secour I | eGAP 2.0 |
| Wednesday | 12:45 PM – 1:45 PM | Jubilee | McKinney-Vento 101: Implementing Homeless Education |
| Thursday | 9:00 AM – 11:15 AM | Bon Secour I | eGAP 2.0 |
| Thursday | 12:45 PM – 3:00 PM | Bon Secour I | eGAP 2.0 |
| Thursday | 12:45 PM – 1:45 PM | Jubilee | So, You're the New Homeless Liaison, Now What? |
| Thursday | 2:00 PM – 3:00 PM | Jubilee | ALSDE Assistance for Charter Schools |
| Friday | 10:15 AM – 11:15 AM | Bon Secour II | A Proven Model: Build Thriving Family-School Partnerships |



AAFEPA Conference



AAFEPA Fall Conference

November 2 – 4, 2022

The Lodge at Gulf State Park



VIP Tickets for Wednesday & Thursday

Thank You!



| | |
|----------------------------|--------------------------|
| Auburn City | Autauga County |
| Blount County | Jasper City |
| Lawrence County | Lee County |
| Mountain Brook City | Russellville City |
| Tallapoosa County | Thomasville City |



Thank You For Joining Us Today!

Don't forget to include any questions
and/or comments on the social wall.

